

72	<i>Lagerstromia speciosa</i>	Queen Crape Myrtle	2	10	8	66%	remove
73	<i>Conocarpus erectus</i>	Green Buttonwood	14	20	15	75%	remove
74	<i>Conocarpus erectus</i>	Green Buttonwood	10	20	15	75%	remove
75	<i>Lagerstromia speciosa</i>	Queen Crape Myrtle	2	10	8	70%	Relocate
76	<i>Phenix dactyloides</i>	Dale Palm	12	40	20	70%	REMAIN
77	<i>Phoenix dactyloides</i>	Dale Palm	10	20	15	75%	REMAIN
78	<i>Phoenix sylvestris</i>	Dale Palm	20	40	20	70%	REMAIN
79	<i>Phoenix sylvestris</i>	Dale Palm	20	10	15	50%	remove
80	<i>Lagerstromia speciosa</i>	Queen Crape Myrtle	2	10	8	66%	remove
81	<i>Sabal palmetto</i>	Cabbage Palm	15	20	15	75%	Relocate
82	<i>Lagerstromia speciosa</i>	Cabbage Palm	20	10	15	75%	Relocate
83	<i>Sabal palmetto</i>	Cabbage Palm	15	22	15	75%	Relocate
85	<i>Conocarpus erectus</i>	Green Buttonwood	14	20	18	70%	remove
86	<i>Lagerstromia speciosa</i>	Queen Crape Myrtle	2	10	8	66%	remove
88	<i>Phoenix sylvestris</i>	Dale Palm	20	40	20	70%	Relocate
89	<i>Phoenix sylvestris</i>	Dale Palm	20	20	15	75%	Relocate
90	<i>Phoenix sylvestris</i>	Dale Palm	20	40	20	80%	Relocate
91	<i>Phoenix sylvestris</i>	Dale Palm	20	40	20	70%	Relocate
92	<i>Phoenix sylvestris</i>	Dale Palm	20	40	20	70%	Relocate
93	<i>Phoenix sylvestris</i>	Dale Palm	20	40	20	70%	Relocate
94	<i>Quercus virginiana</i>	Live Oak	10	15	12	60%	Relocate
95	<i>Sabal palmetto</i>	Cabbage Palm	15	15	10	70%	REMAIN
96	<i>Sabal palmetto</i>	Cabbage Palm	12	20	15	75%	REMAIN
97	<i>Conocarpus erectus</i>	Green Buttonwood	8	20	12	65%	remove
98	<i>Sabal palmetto</i>	Cabbage Palm	20	10	15	75%	REMAIN
99	<i>Sabal palmetto</i>	Cabbage Palm	12	20	15	75%	REMAIN
100	<i>Sabal palmetto</i>	Cabbage Palm	12	20	15	75%	REMAIN
101	<i>Sabal palmetto</i>	Cabbage Palm	20	15	15	75%	REMAIN
102	<i>Conocarpus erectus</i>	Green Buttonwood	8	10	10	65%	remove
103	<i>Conocarpus erectus</i>	Green Buttonwood	10	18	15	60%	remove
104	<i>Conocarpus erectus</i>	Green Buttonwood	12	10	10	65%	remove
105	<i>Conocarpus erectus</i>	Green Buttonwood	16	18	15	70%	remove
106	<i>Conocarpus erectus</i>	Green Buttonwood	10	18	15	70%	remove
108	<i>Sabal palmetto</i>	Cabbage Palm	15	30	20	75%	Relocate
109	<i>Sabal palmetto</i>	Cabbage Palm	20	25	15	75%	Relocate
110	<i>Sabal palmetto</i>	Cabbage Palm	15	30	15	70%	Relocate
111	<i>Sabal palmetto</i>	Cabbage Palm	15	30	20	75%	Relocate
112	<i>Sabal palmetto</i>	Cabbage Palm	12	15	22	75%	Relocate
113	<i>Conocarpus erectus</i>	Green Buttonwood	10	25	18	75%	remove
114	<i>Conocarpus erectus</i>	Green Buttonwood	12	30	20	75%	remove
115	<i>Conocarpus erectus</i>	Green Buttonwood	10	20	17	70%	remove
116	<i>Conocarpus erectus</i>	Green Buttonwood	14	25	20	75%	Relocate
117	<i>Lagerstromia speciosa</i>	Queen Crape Myrtle	2	10	8	65%	Relocate
118	<i>Lagerstromia speciosa</i>	Queen Crape Myrtle	2	10	8	65%	Relocate
119	<i>Conocarpus erectus</i>	Green Buttonwood	4	15	10	60%	remove
120	<i>Lagerstromia speciosa</i>	Queen Crape Myrtle	2	10	8	70%	Relocate
121	<i>Lagerstromia speciosa</i>	Queen Crape Myrtle	2	10	8	70%	Relocate
122	<i>Conocarpus erectus</i>	Green Buttonwood	6	12	10	75%	REMAIN
123	<i>Conocarpus erectus</i>	Green Buttonwood	10	12	10	75%	REMAIN
124	<i>Conocarpus erectus</i>	Green Buttonwood	4	17	15	75%	Relocate
125	<i>Lagerstromia speciosa</i>	Queen Crape Myrtle	2	17	15	80%	Relocate
126	<i>Conocarpus erectus</i>	Green Buttonwood	15	15	12	75%	Relocate
127	<i>Conocarpus erectus</i>	Green Buttonwood	6	10	10	70%	Relocate
128	<i>Lagerstromia speciosa</i>	Queen Crape Myrtle	2	10	8	70%	REMAIN
129	<i>Conocarpus erectus</i>	Green Buttonwood	18	15	15	75%	Relocate
130	<i>Conocarpus erectus</i>	Green Buttonwood	8	17	12	65%	remove
131	<i>Conocarpus erectus</i>	Green Buttonwood	6	18	12	60%	remove
132	<i>Quercus rosea</i>	Live Oak	12	10	10	70%	remove
135	<i>Quercus virginiana</i>	Live Oak	10	15	18	70%	remove
137	<i>Conocarpus erectus</i>	Palm Tree	10	10	10	70%	remove
138	<i>Quercus virginiana</i>	Palm Tree	10	15	18	70%	remove
140	<i>Roystonia elata</i>	Royal Palm	8	18	15	70%	Relocate
141	<i>Roystonia elata</i>	Royal Palm	15	38	20	80%	Relocate
142	<i>Conocarpus erectus</i>	Royal Palm	6	20	20	80%	Relocate
143	<i>Roystonia elata</i>	Royal Palm	15	38	20	80%	Relocate
144	<i>Conocarpus erectus</i>	Silver Buttonwood	5	12	10	75%	remove
145	<i>Conocarpus erectus</i>	Silver Buttonwood	10	10	10	75%	remove
146	<i>Conocarpus erectus</i>	Silver Buttonwood	5	12	12	75%	remove
147	<i>Conocarpus erectus</i>	Silver Buttonwood	5	10	10	75%	remove
148	<i>Conocarpus erectus</i>	Silver Buttonwood	10	10	10	70%	remove
149	<i>Roystonia elata</i>	Royal Palm	15	38	20	60%	remove
148	<i>Roystonia elata</i>	Royal Palm	15	38	20	65%	remove
149	<i>Roystonia elata</i>	Royal Palm	20	20	20	75%	Relocate
150	<i>Roystonia elata</i>	Royal Palm	15	38	20	75%	Relocate
151	<i>Sabal palmetto</i>	Cabbage Palm	20	12	14	70%	Relocate
152	<i>Sabal palmetto</i>	Cabbage Palm	10	12	12	75%	Relocate
153	<i>Sabal palmetto</i>	Cabbage Palm	10	20	15	75%	Relocate
154	<i>Conocarpus erectus</i>	Green Buttonwood	15	15	12	75%	Relocate
155	<i>Sabal palmetto</i>	Cabbage Palm	10	20	12	75%	Relocate
156	<i>Sabal palmetto</i>	Cabbage Palm	12	20	10	65%	remove
157	<i>Sabal palmetto</i>	Cabbage Palm	20	10	10	65%	remove
158	<i>Sabal palmetto</i>	Cabbage Palm	12	18	10	65%	remove
159	<i>Sabal palmetto</i>	Cabbage Palm	15	15	12	65%	remove
160	<i>Sabal palmetto</i>	Cabbage Palm	20	10	12	60%	remove
161	<i>Sabal palmetto</i>	Cabbage Palm	10	20	15	65%	remove
162	<i>Sabal palmetto</i>	Cabbage Palm	15	18	15	65%	remove
163	<i>Sabal palmetto</i>	Cabbage Palm	18	10	12	60%	remove
164	<i>Sabal palmetto</i>	Cabbage Palm	15	15	12	65%	remove
165	<i>Sabal palmetto</i>	Cabbage Palm	15	20	15	65%	remove
166	<i>Sabal palmetto</i>	Cabbage Palm	20	10	15	65%	remove
167	<i>Sweetenia mahagoni</i>	Sweet Mahogany	24	40	35	60%	REMAIN
168	<i>Sweetenia mahagoni</i>	Sweet Mahogany	25	35	30	60%	REMAIN
169	<i>Sweetenia mahagoni</i>	Sweet Mahogany	16	30	30	60%	REMAIN
170	<i>Quercus virginiana</i>	Live Oak	12	40	35	65%	REMAIN
171	<i>Ilex cassine</i>	Dahoon Holly	10	20	15	65%	REMAIN
172	<i>Quercus virginiana</i>	Live Oak	15	35	25	75%	REMAIN
173	<i>Quercus virginiana</i>	Live Oak	15	30	25	70%	REMAIN
174	<i>Ilex cassine</i>	Dahoon Holly	10	22	10	60%	REMAIN
175	<i>Ilex cassine</i>	Dahoon Holly	8	20	15	60%	REMAIN
176	<i>Ilex cassine</i>	Dahoon Holly	6	20	12	65%	REMAIN
177	<i>Ilex cassine</i>	Dahoon Holly	10	20	12	60%	REMAIN
178	<i>Ilex cassine</i>	Dahoon Holly	8	15	10	65%	REMAIN
179	<i>Ilex cassine</i>	Dahoon Holly	10	15	12	75%	REMAIN
180	<i>Ilex cassine</i>	Dahoon Holly	4	10	10	70%	REMAIN
181	<i>Ficus benjamina</i>	Ficus	20	40	35	60%	REMAIN
182	<i>Ilex cassine</i>	Dahoon Holly	10	10	10	70%	REMAIN
183	<i>Quercus virginiana</i>	Live Oak	15	40	30	60%	REMAIN
184	<i>Quercus virginiana</i>	Live Oak	8	15	10	75%	REMAIN
185	<i>Quercus virginiana</i>	Live Oak	15	25	20	70%	REMAIN
TOTAL NON-SPECIMEN DBH INCHES ON SITE (N.I.C INVASIVE SPECIES OR PALMS)							
TOTAL NON-SPECIMEN DBH INCHES REMOVED							
TOTAL PALMS REMAINING (N.I.C. SCRUB PALMETTO)							
TOTAL PALMS REMOVED (N.I.C. SCRUB PALMETTO)							
VALUE OF SPECIMEN TREES TO BE REMOVED							
780							

1. PLANT MATERIAL: All plant material shall be Florida #1 or better as established by "Grades and Standards for Nursery Plants" of the state of Florida, Department of Agriculture.

2. All trees, shrubs and groundcovers shall be of the sizes as specified in the Plant List.

2. All trees, shrubs, and groundcovers shall be of the sizes as specified.

2. All trees, shrubs and groundcovers shall be of the sizes as specified in the Plant List.

3. Quantities listed on the the Plant List are for estimating purposes. Contractor shall verify all quantities. Mulch, topsoil, fertilizer, etc. shall be included in the unit cost of the plants.

4. Where there is a discrepancy either in quantities, plant names, sizes or specifications between the plan or plant list, the plan takes precedence.

5. All planting beds and water basins for trees shall be covered with a 3" minimum depth of shredded eucalyptus or flormulch grade 'B' or better.

6. The Planting Plan shall be installed in compliance with all existing codes and applicable deed restrictions.

Grassing shall extend to any abutting street pavement edge and to the mean waterline of any abutting canal, lake or waterway.

8. **PLANTING SOIL:** All trees and shrubs shall be planted with a minimum of 12" topsoil around and beneath the rootball. Minimum topsoil shall be 6" for groundcover areas and 2" for sodded grass areas.

9. Planting soil to be a weed-free mixture of 50% sand, 40% muck, and 10% Canadian peat. All plant material to receive planting soil as per details.

10. Contractor is responsible for determining all utility locations and installing facilities so as to not conflict. All damage to existing utilities or improvements caused by Contractor shall be repaired at no additional cost to the Owner.

11. Contractor to notify "Sunshine State One Call of Florida, Inc." at 1-800-432-4770 Two Full Business Days prior to digging for underground utility locations.

12. Contractor shall be responsible for providing final grading of all associated planting areas.

13. After final grade, area to be raked to 6" depth and all rock and foreign inorganic materials removed and disposed of properly off-site.

14. All planting holes to be hand dug except where machine dug holes will not adversely affect or damage utilities or improvements (see note 8)

15. No plunging of any tree or palm will be accepted. All plants to be planted at the nursery grade or slightly higher.

16. Contractor shall stake & guy all trees and palms at time of planting as per the appropriate detail. Contractor is responsible for the maintenance and/or repair of all staking and guying during warranty period and removal & disposal of staking after establishment period.

17. Fertilizer for grass areas shall be NPK 16-4-8 @ 12.5 lbs/1000 s.f. or 345 lbs/acre. Nitrogen 50% slow release form & fertilizer to include secondary micronutrients.

10. **SUBSTITUTIONS AND CHANGES:** All substitutions and changes shall be approved in writing prior to installation. Any discrepancies between plans, site and specifications shall be brought to the immediate attention of the Landscape Architect, the owner and governing municipality.

19. **WATERING:** All plant material shall be watered in at time of planting in accordance with standard nursery practices. In addition, Contractor will continue watering of plant material until substantial completion and as needed thereafter for a period of 2 months.

20. All new plant material shall be guaranteed for 1 year from time of final acceptance of project. Any plant material not in a healthy growing condition will be replaced by the Contractor at no additional cost to the Owner within 10 days of notification. For all replacement plant material, the warranty period shall be extended an additional 45 days beyond the original warranty period. All trees that lean or are blown over, caused by winds less than 15 mph will be re-set and braced by the Contractor at no additional cost to the Owner.

21. The successful bidder shall furnish to the Owner a unit price breakdown for all materials. The Owner may, at its discretion, add or delete from the materials utilizing the unit price breakdown submitted.

22. No plant material will be accepted showing evidence of cable, chain marks, equipment scars, or otherwise damaged.

23. Plant material will not be accepted when the ball of earth surrounding its roots has been cracked, broken or otherwise damaged.

24. Root-prune all trees a minimum of (10) weeks prior to planting.

25. All landscaped areas will be irrigated by an underground, automatic, rust-free irrigation system providing 100% coverage and 100% spray overlap. The system shall be maintained in good working order and

designed to minimize water on impervious surfaces and not overspray walkways. A rain sensor device shall be installed to override the irrigation cycle of the system when adequate rainfall has occurred.

26. All plant material planted within the sight distance triangle areas (see plan) shall provide unobstructed cross-visibility at a horizontal level between 30 inches and 8 feet above adjacent street grade.

27. No canopy trees shall be planted within 15 feet of a light pole. No palm species shall be planted within 10 feet of a light pole.

28. Ground cover plantings shall provide not less than 50 percent coverage immediately upon planting and 100 percent coverage within 6 months after planting.

29. Tree protection barricades shall be provided by Landscape Contractor around existing trees that may be impacted by the proposed construction. Prior to any construction a tree protection barricade

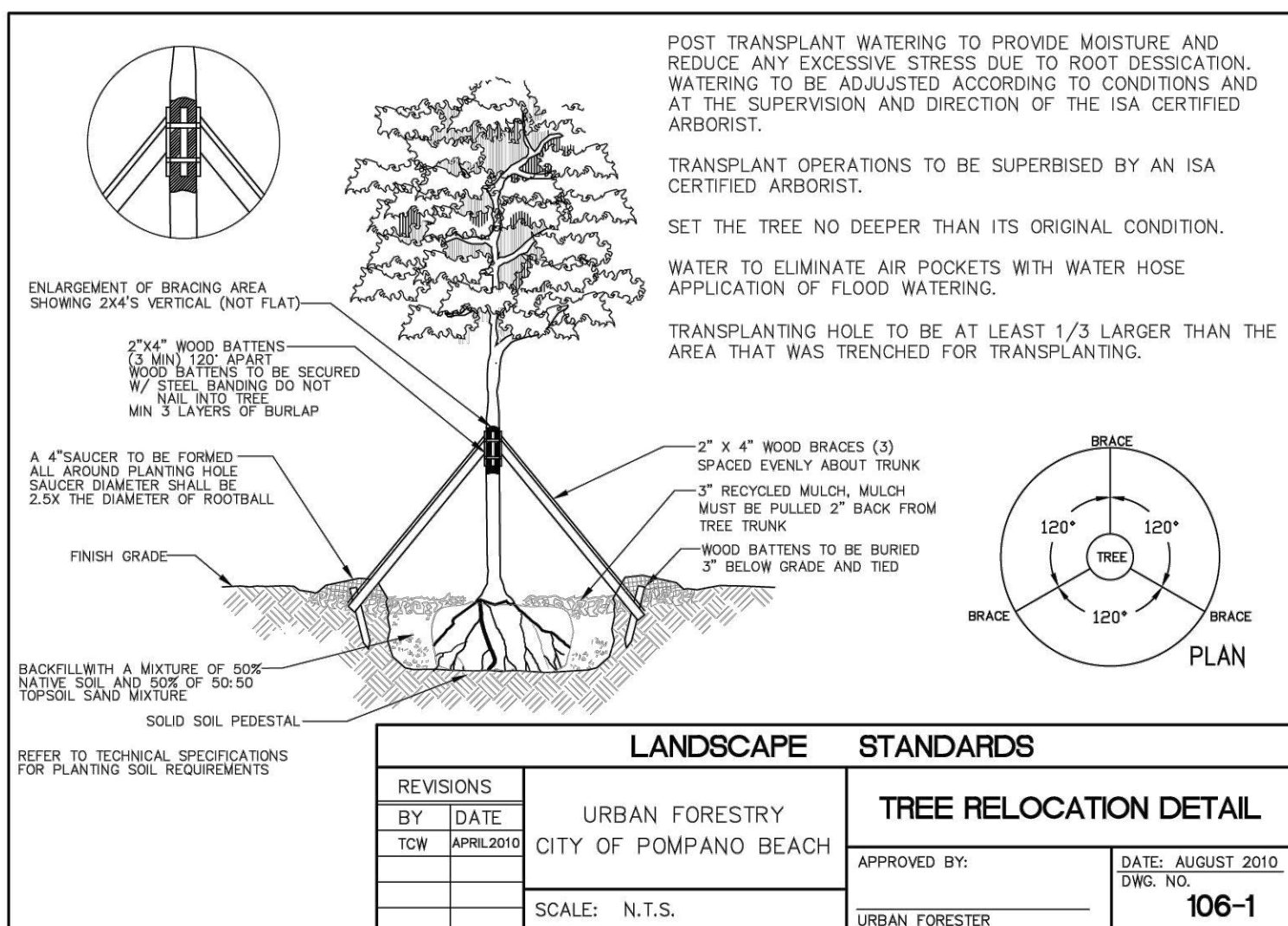
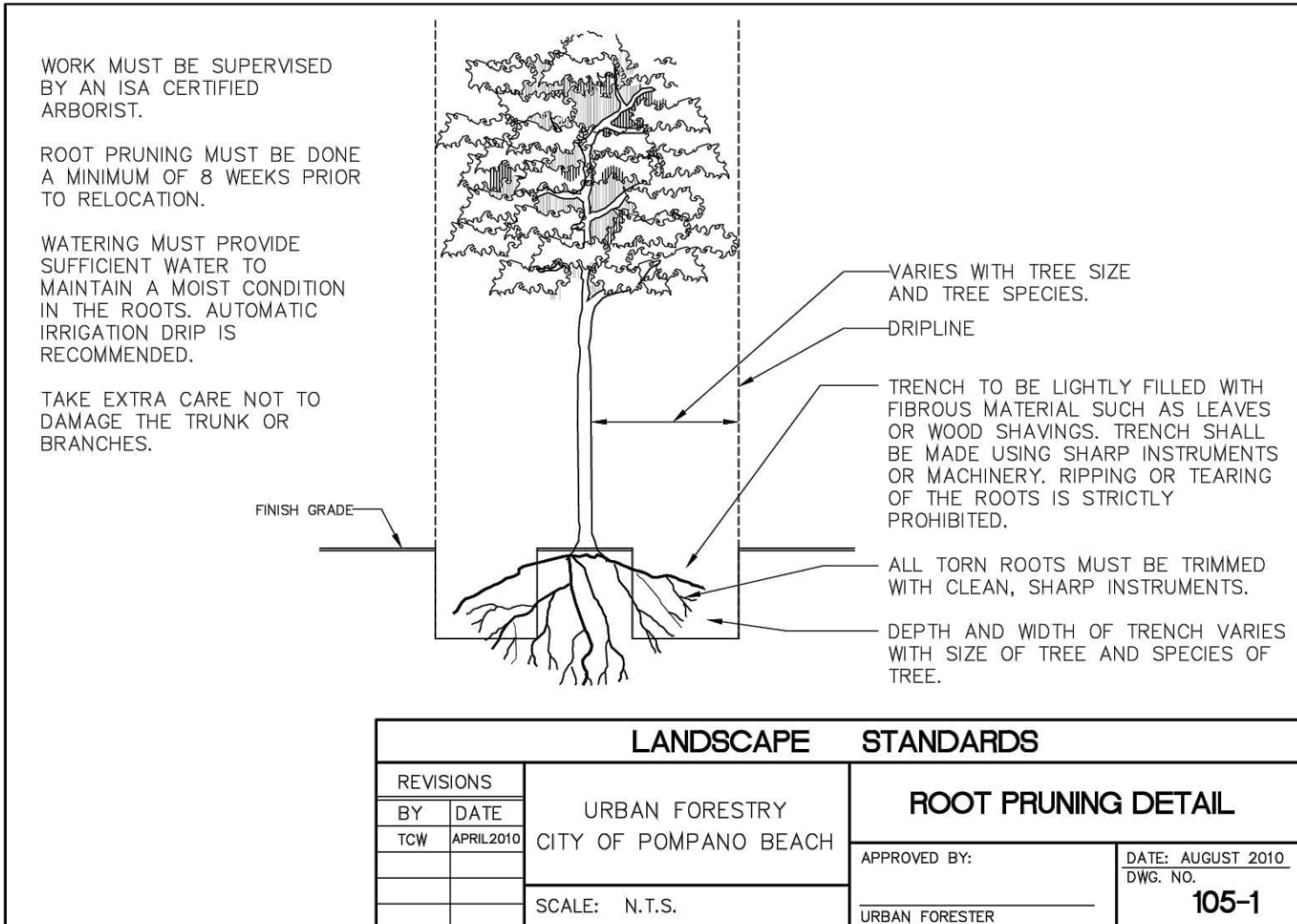
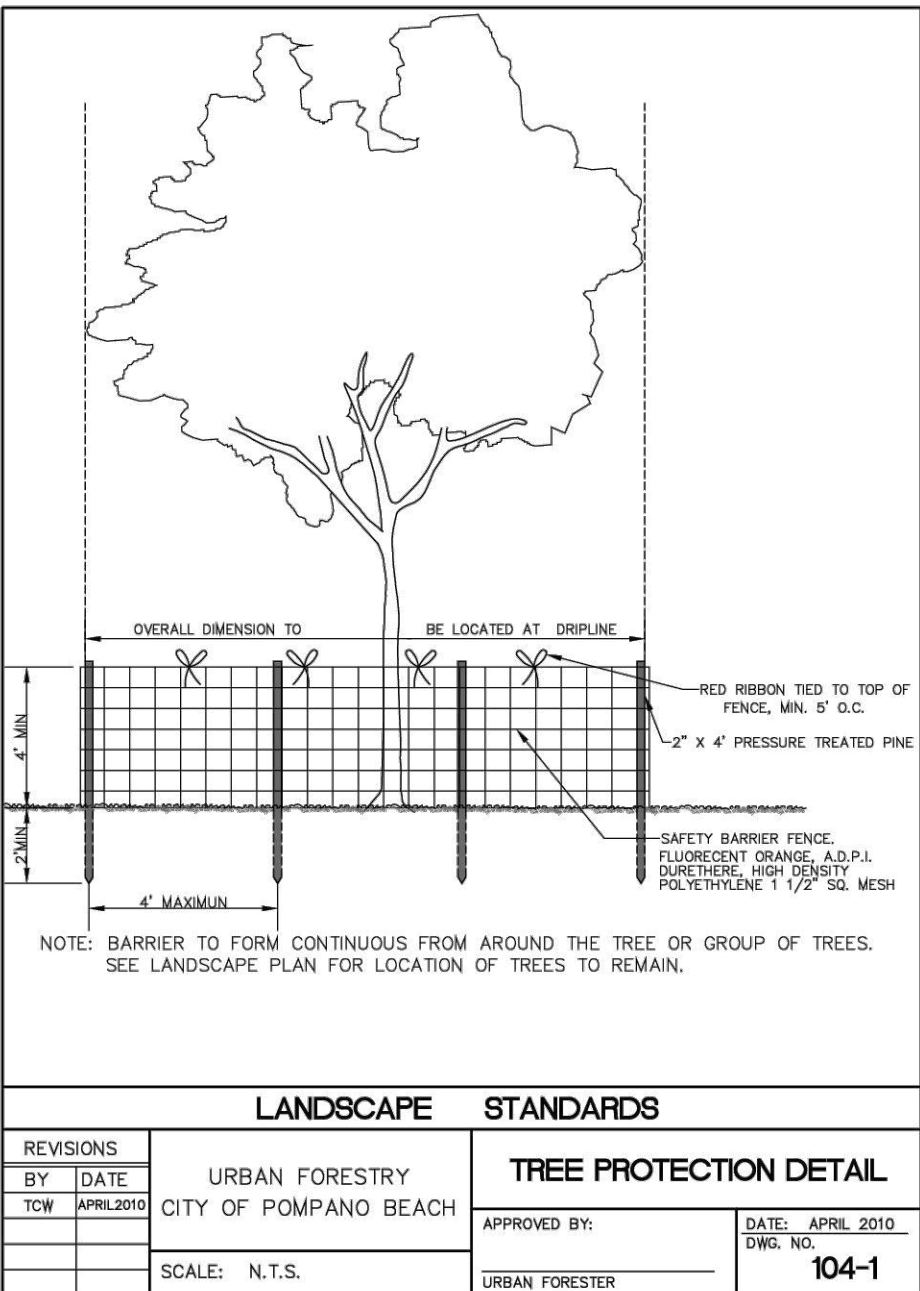
Inspection shall be conducted by the landscape architect, owner or governing municipality. Refer to landscape detail for tree preservation barricade fencing.

30. In all pedestrian areas, all trees and palms shall be maintained to allow for clear passage at an 8 foot clear trunk.

31. All landscape material shall be setback a minimum of 10' from any Fire Hydrant.

Digitally  
signed by  
Michael D  
Grosswirth  
Date:  
2024.04.05  
07:41:29  
-04'00'

A PRE-CONSTRUCTION MEETING WITH URBAN FORESTRY S REQUIRED BEFORE ANY PLANT MATERIAL IS INSTALLED ON SITE OR SITE WORK AFFECTING EXISTING TREES.



Tree, Palm, Shrub and other Plant Transplanting/Relocating Detail — Recommended Notes:

The American National Standard for Tree Care Operations – Tree, Shrub, and Other Woody Plant Maintenance – Standard Practices (Transplanting) ANSI A300(Part 6)–2005 must be adhered to in its entirety for all relocating/transplanting of trees and shrubs. ANSI A300 (Part 6)–2005 includes the following:

- 60– Transplanting Standards
- 61 – Normative References
- 62 – Definitions
- 63 – Transplanting Practices

The transplanting objectives shall be established prior to beginning the operation. These objectives may be presented in a report format for permitting purposes.

A feasibility and suitability assessment shall be conducted prior to recommending transplanting. Specifications for transplanting should be based on the assessment. See the Checklist in Annex A of ANSI A300 (Part6)–2005. This assessment may be presented in a report format for permitting purposes.

maintained to allow for clear passage at an 8 foot

**AAC**  
PZ23-12000033  
05/07/2024

[illegible]